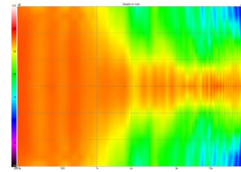
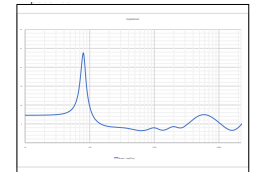


Horizontal Directivity



Vertical Directivity



Impedance

MODEL S5i-C



TECHNICAL SPECIFICATIONS



Based largely on our flagship S5m. This is the center channel implementation. Here we have adapted the design for inwall applications. Shallow 4" mounting depth and integral aluminum extrusion rear enclosure insure consistent performance and minimal sound propagation to adjacent rooms. Featuring our proprietary DPC-Array controlling Mid/High frequencies, centered by our finest 28mm Beryllium dome and dual 28mm TPCD ultra-lightweight domes. All transducers are developed ground up by our engineers – bringing decades of research, culminating in this world class design. We teamed up with companies in the USA and Sweden to bring modern material science to hi-fi. Utilizing advanced Comsol acoustical modeling, our DPC-array is the result of 18 months of painstaking simulations and prototyping. The result is one of the most technologically advanced loudspeakers available. This new tweeter/waveguide DPC-Array delivers amazing accuracy, smoothness, and directivity control to handle the critical vocal range and delicate treble. All S-Series speakers share the same DPC-Array and benefit from our unique timbre matching technique across the entire series. Another Perlisten inwall loudspeaker to be certified for THX Dominus - their highest rating.

BASIC

Dimensions (HxWxD)
 298 x 665 x 111mm
 11.8 x 26.2 x 4.4"

Mounting dimensions (HxWxD)
 257 x 624 x 101.7mm
 10.1 x 24.6 x 4.0"

Weight
 15.9 kg (35.0 lbs.)

Available finishes
 White

TECHNICAL

Enclosure Alignment
 3-way acoustic suspension

Driver complement
 DCP-Array: 28mm Beryllium
 28mm(2) Textreme TPCD
 Woofers: 180mm(2) Textreme TPCD

Sensitivity (2pi)
 91.6dB / 2.83v / 1.0m

Impedance
 4Ω nominal / 3.2Ω min

Response Linearity
 80 - 20kHz +/-1.5dB window

Frequency Response (-10dB)
 50 - 37kHz

Typical In Room bass extension
 42Hz

Recommended Amplifier Power
 100 - 350W RMS

SPL capability @1m (100-20kHz)
 117.0dB peak
 117.0dB peak <3% 2nd, 3rd Harmonics

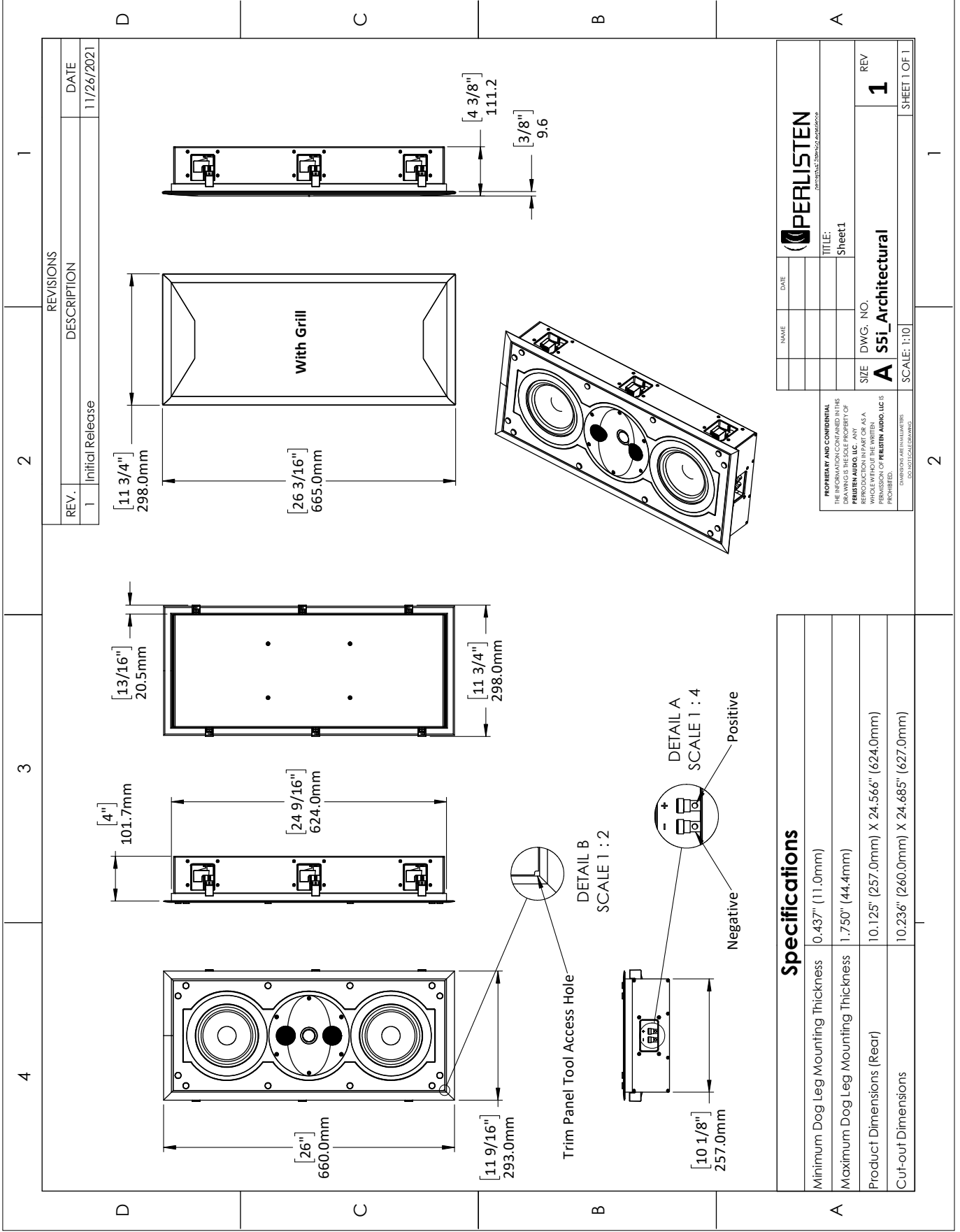
Certification
 THX Dominus



DPC Array
 Directivity pattern control
 *USA Patent pending



TPCD
 Thin Ply Carbon Diaphragms



REVISIONS		DATE
REV.	DESCRIPTION	
1	Initial Release	11/26/2021

NAME	DATE
TITLE:	Sheet 1
SIZE	DWG. NO.
A	S5i_Architectural
REV	1
SCALE: 1:10	
SHEET 1 OF 1	

Specifications	
Minimum Dog Leg Mounting Thickness	0.437" (11.0mm)
Maximum Dog Leg Mounting Thickness	1.750" (44.4mm)
Product Dimensions (Rear)	10.125" (257.0mm) X 24.566" (624.0mm)
Cut-out Dimensions	10.236" (260.0mm) X 24.685" (627.0mm)

PROPRIETARY AND CONFIDENTIAL
 THE INFORMATION CONTAINED IN THIS DRAWING IS THE SOLE PROPERTY OF PERLISTEN AUDIO, LLC. ANY REPRODUCTION OR TRANSMISSION OF PERLISTEN AUDIO, LLC IS PROHIBITED.
 DIMENSIONS ARE IN MILLIMETERS UNLESS OTHERWISE SPECIFIED